

parkell®



Product Catalogue 2026



Where innovation meets legacy in dentistry.

DIGITEST[®] 3

Pulp Vitality Tester

Learn More



When percussion, ice, heat and X-rays are not enough, Digitest[®] 3 is the diagnostic tool you need. Comparing the response to the stimulus of the suspected tooth with a known healthy tooth's response to an identical stimulus can help you hone in on the source of the patient's pain.

KEY FEATURES

- ✓ Accurately check pulp vitality, even in the presence of crowns or extensive restorations.
- ✓ Test and monitor the progress of traumatised teeth.
- ✓ Objectively determine the source of the patient's pain.



Includes 4 autoclavable probes



A single button operation



Several settings available



Digitest 3 is an incredibly easy-to-use instrument, useful for both diagnosis and monitoring. Compared to other tests, Digitest 3 is less annoying for the patient, as we can modulate the discharge intensity."

— Dr. Giuseppe Chiodera, DDS, Italy

Styleitaliano Honorary Member



SKU

PRODUCT DESCRIPTION

SKU	PRODUCT DESCRIPTION
D655	Digitest[®] 3 Pulp vitality tester (4) Autoclavable Probes; 1-standard long, 1-standard short, 1-labial, 1-lingual, (1) Ground Clip, (1) Lead Wire, (1) 9V Battery
D636	Precision Probe set (2) Probes; one labial, one lingual
D625	Standard Metal Probe Set (2) Probes; one short & one long
D631GC	Pulp Testing Ground Clip & Lead Wire (2) Clips, (1) Wire

Dryz[®] blu

Hemostatic gingival retraction paste



Get
Free Samples



Dryz[®] Blu controls bleeding and crevicular fluids during impression taking, subgingival restorations, crown placement and dam placement.

KEY FEATURES

- ✓ Aluminium chloride 23%.
- ✓ Highly visible aqua blue colour.
- ✓ Creamy, adapts well and is very easy to remove.
- ✓ Available in syringes and single-dose capsules.



Dr. Simona Giani, DDS, Italy

“ Dryz Blu is the retraction paste of choice in my dental clinic. After trying every retraction paste in the market, I can definitely say it's simply the best. Its creamy consistency makes it easy to dispense and, above all, considerably easier to wash away than all other available retraction pastes.”



— Dr. Milad George DDS, MDS, Sweden



SKU	PRODUCT DESCRIPTION
SS187	Dryz [®] Blu Unit Dose Capsules Kit (30) unit dose capsules (0.24g/capsule)
SS190	Dryz [®] Blu Syringes Kit (7) 0.5 ml (0.85g) syringes, (15) applicator tips
S191	Dryz [®] Blu Syringes Value Pack (25) 0.5 ml (0.85g) syringes, (55) applicator tips

ACCESSORIES & REFILLS	
S181	Dryz Syringe Luer Lock Applicator Tips (40)

Predicta[®] desensitizer

BIOACTIVE

Desensitising gel



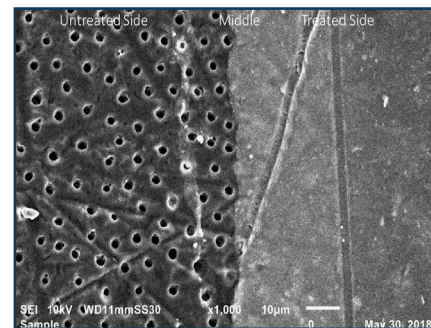
Learn More



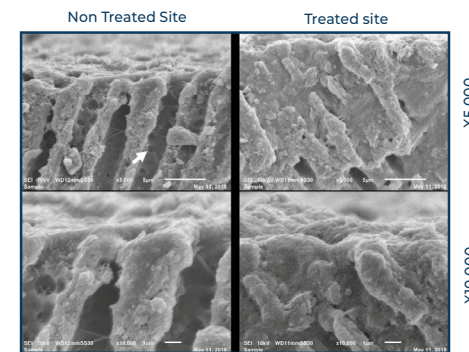
Predicta[®] Bioactive Desensitizer uses the elements that are naturally found in the tooth, (calcium and phosphate) and restores them to the tooth in the form of hydroxyapatite plugs that immediately start forming in the dentinal tubules upon application.

KEY FEATURES

- ✓ Gel in syringe, no mixing required.
- ✓ Highly biocompatible, free from methacrylate and irritants.
- ✓ Treats hypersensitivity caused by exposed roots following periodontal surgery, teeth whitening, scaling, root planing or gum recession.



Untreated dentinal tubules (left) and tubules covered with Predicta[®] Bioactive Desensitizer (right). Image: University of Washington School of Dentistry



Cross-sectional SEM images. Dentinal tubules and open lateral branch orifices (arrow) well sealed on the treated side. (Image: University of Washington School of Dentistry)

“

Predicta Desensitizer is very effective, it works very well immediately blocking the sensitivity for several days and with a second application it dramatically reduces sensitivity in the long term.”

— Dr. Consuelo Sanavia, Dental Hygienist, Italy



SKU	PRODUCT DESCRIPTION
S626	Single Syringe Kit (1) 3 ml syringe, (10) applicator tips, (15) applicator brushes, (1) mixing well
S625	Three Syringe Kit (3) 3 ml syringes, (30) applicator tips, (50) applicator brushes, (1) mixing well
ACCESSORIES & REFILLS	
S390	Dispensing Tip (Pre-Bent/Yellow) Refill (30 pcs)
S391	Fine (1.5mm) Micro Brush Applicator Refill (100 pcs)

Predicta® bulk

BIOACTIVE

Universal dual-cure composite



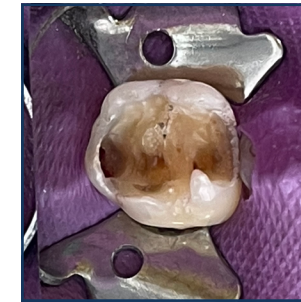
Learn More



A dual-cure composite that can be used to fill any size cavity preparation, all the way up to the occlusal surface, without any need for additional layering. Ideal for posterior restorations & amalgam substitute.

KEY FEATURES

- ✓ Dual-cure for unlimited depth of cure.
- ✓ Fluorescence for a more natural appearance.
- ✓ Nanohybrid for optimal polish, strength and durability.
- ✓ Releases calcium and phosphate ions and releases and recharges fluoride ions.



Dr. Jure Poglajen, DDS, Slovenia

“

When I started using Predicta, I was pleasantly surprised by the excellent color adaptability of this composite. Using only the A2/B2 shade, I have been able to match almost every tooth shade.”

— Dr. Manouchehr Kiaei, DDS, Sweden



SKU	PRODUCT DESCRIPTION
S615	Bulk-Fill - A1/B1 Shade , Include (1) 5 ml hand-held syringe and (20) 17-gauge mixing tips
S616	Bulk-Fill - A2/B2 Shade , Include (1) 5 ml hand-held syringe and (20) 17-gauge mixing tips
S610	Bulk-Fill (LV) - A1/B1 Shade , Include (1) 5 ml hand-held syringe and (20) 17-gauge mixing tips
S611	Bulk-Fill (LV) - A2/B2 Shade , Include (1) 5 ml hand-held syringe and (20) 17-gauge mixing tips

ACCESSORIES & REFILLS	
S621	17- Gauge Applicator tips (30 pcs)
S622	19- Gauge Applicator tips (30 pcs)

AccuFilm®

Articulating Films

Articulating Films for precision occlusion marking, offering an ultra-thin profile at just 19 microns. Patients experience no noticeable thickness between their teeth when biting down, resulting in highly accurate occlusion checks.

KEY FEATURES

- ✓ Super thin 19 micron articulating film for maximum sensitivity.
- ✓ High precision occlusion detection for clinical accuracy.
- ✓ Trusted dental marking film with no false readings.

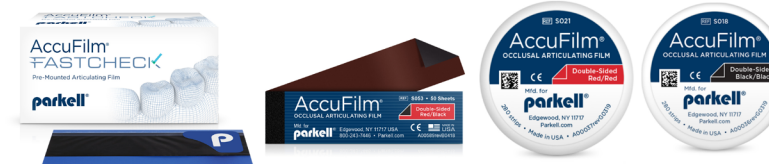
Learn More



“

AccuFilm is one of the thinnest articulating materials I've used. It's tear-resistant, stretches without breaking, and delivers precise, consistent markings every time.”

— Dr. Millaray Santana Lindblom, DDS, Sweden



SKU

PRODUCT DESCRIPTION

SKU	PRODUCT DESCRIPTION
 S014	AccuFilm® Marking Film Single-Sided — Black ; (1) canister of 280 pre-cut strips
 S015	AccuFilm® Marking Film Single-Sided — Red ; (1) canister of 280 pre-cut strips
 S017	AccuFilm® Marking Film Double-Sided — Red/Black ; (1) canister of 280 pre-cut strips
 S018	AccuFilm® Marking Film Double-Sided — Black/Black ; (1) canister of 280 pre-cut strips
 S021	AccuFilm® Marking Film Double-Sided — Red/Red ; (1) canister of 280 pre-cut strips
 S053	AccuFilm® Marking Film Booklet Double-Sided — Red/Black ; (5) booklets (50 sheets/booklet, 250 sheets ttl.)
 S054	AccuFilm® FastCheck Articulating Film Double-Sided — Blue/Blue ; (100 strips)

Blu-Mousse®

VPS Bite Registration Material



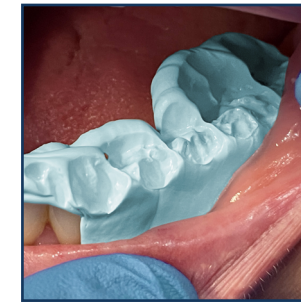
Learn More



Blu-Mousse® is a legacy VPS bite registration material that has delivered reliable results for over two decades. Introduced in 1987, it remains a trusted choice for dental clinicians who need precise interocclusal records with minimal adjustment at the lab stage.

KEY FEATURES

- ✔ Stays stacked on the occlusal surface during placement.
- ✔ Optimal consistency allows patient to naturally close with zero resistance while capturing every detail.
- ✔ Hardens to a plaster-like final set with a durometer of 90 to ensure precise articulations.
- ✔ Set times: 30 Seconds | 60 Seconds | 2 Minutes



“

I've been using Parkell's Blu Mousse for over 20 years. I believe accuracy is the key in Dentistry and Parkell's Blu Mousse is extremely accurate.

— Dr. Glenn Goodhart, DDS, USA



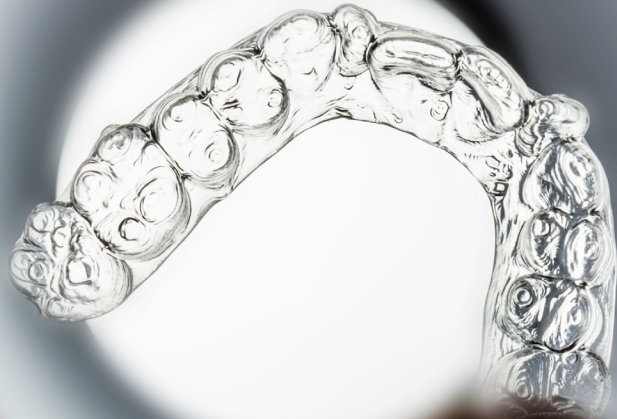
SKU	DESCRIPTION	SET TIME	SCENT
S457S	Blu-Mousse Super-Fast	30 Sec.	Unscented
S448S	Blu-Mousse Super-Fast	30 Sec.	Peppermint
S440S	Blu-Mousse 60	60 Sec.	Unscented
S438S	Blu-Mousse Classic	2 Min.	Unscented
S437S	Blu-Mousse Classic	2 Min.	Peppermint

ACCESSORIES & REFILLS

S445	50 ml Split-Cartridge Mixing Tip Refill - Pink Base (30)
------	--

MACH[®]

Die Silicone



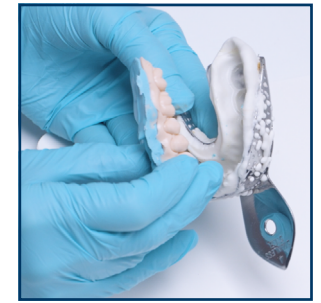
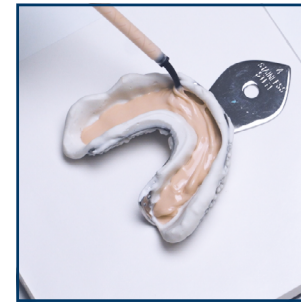
Learn More



Mach Die-Silicone and Blu-Mousse combine to create fast, precise models for prosthetics, thermoformed trays for whitening or fluoride treatments, mouth guards and orthodontic trays.

KEY FEATURES

- ✓ Ultra-fast workflow: complete working model in minutes (bench set ≈ 2 minutes).
- ✓ Superior detail capture: highly fluid Mach flows better than stone.
- ✓ High strength and durability: 90+ durometer for precise, stable models.
- ✓ Clean and efficient: automix delivery, razor trimming, no dust or burs.



“


With Mach Die Silicone and Blu Mousse, I can fabricate precise bleaching trays chairside in minutes — no lab, no delay. It's fast, accurate, and makes same-day whitening possible for my patients.”

— Dr. Laurence Berenholc-Bury, DDS, France



SKU	PRODUCT DESCRIPTION
S433S	Mach® Die-Silicone Includes (2) 50ml automix cartridges (100ml ttl.), (10) Yellow Mixing tips, and (10) Dark Grey Intraoral tips
ACCESSORIES & REFILLS	
S302	50 ml Mixing Tip Refill - Yellow Base (30)
S308	Intraoral Tip Refill - Dark Grey (50)



Parkell Europe AB, Finvids väg 8, 194 27 Upplands Väsby, Sweden
infoeurope@parkell.com,  +46 708 593 481 Website: parkell.eu